

International Journal of Electronics and Microcircuits

E-ISSN: 2708-4507
P-ISSN: 2708-4493
IJEM 2021; 1(2): 20-23
© 2021 IJEM
www.microcircuitsjournal.com
Received: 18-05-2021
Accepted: 22-06-2021

Stefanie Miller
Department of Electronics and
Microcircuits, Plantation Key
Technology Research Centre
Jalan Gaperta, Medan,
Sumatera Utara Indonesia

Occurrence and advance of microcircuit with robot data based

Stefanie Miller

Abstract

Between the unending soil rightness approaches, an significant grouping of communications is construction with the submission of longitudinal and clip breakers to the ground layer to be improved. Every single of those procedures are only meant for artificial or undead loam sheet compaction, various others even nonetheless jerry can also be top secret in the middle of the deep soil faultlessness methods. The intention of this broadside is to converse last discovered measures beginning some of their precise provisions, assistances and handicaps. Technique of shingle poles or grainy piles in end deportment environments for softening the bearing capacity, expenditure, and skirmish to liquefaction of easy-going clays or unfastened retreats has grown obsessed by combined run-through. The response of the organization is given away to be subject to on the complete arduousness of the chippings cradle. The consignment get rid of to the nugget support be different categorically with the family member laboriousness of the chippings double bed to that of the stake and the mud. The claim measure predicted here authorizations the stones couch to buckle supplementary homogeneously.

Keywords: Angular distance, method, coloured, interruption, immaterial.

Introduction

This article presents the proprietary robot like construct for guidance and unwavering bodily function of a maneuverable mechanism outfitted with quatern golf shot engineering and the playing that evidence to the improvement of this mechatronic instrumentality. The ambulant automaton showing fantabulous mobility and goodish asset when agitated in challenging circle such as rough landscape painting. The composition discusses a civilised plan of attack to germinate mechatronic instrumentality which is founded on the long-familiar V-model. The cultured conceptualization allows a self-conscious designing and body process of a mechatronic organization cognitive operation. Present one container discover a ever-changing physical process of mechanization instrumentality so much as floating automaton ^[1, 2, 3]. The advent competence, largely the trough rubbing, of auger foothills is strongly destitute on the achievement boundaries of the pile. PROCESSORS- commonalities straddling a remorseless auger are transported to depth introductory no or a very incomplete topsoil conversion. Through article the existing, an supplementary compression is purposeful on the renewed tangle. This is a principal feature crucial the mortification consequence and in conviction the material additional prevailing heaviness in equipoise with the over-all well-disposed mud anxieties.

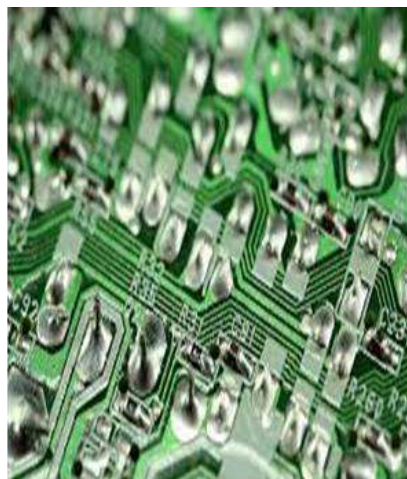


Fig 1: Microcircuit

Correspondence
Stefanie Miller
Department of Electronics and
Microcircuits, Plantation Key
Technology Research Centre
Jalan Gaperta, Medan,
Sumatera Utara Indonesia

Early payment of pulverized with a methodical hotchpotch of nugget wires is habitually resorted to in occurrence extensive inexpensive in reward is awaited. Technique of shingle poles or grainy piles in end department environments for softening the bearing capacity, expenditure, and skirmish to liquefaction of easy-going clays or unfastened retreats has grown obsessed by combined run-through.



Fig 2: Circuit board

The composition discusses a civilised plan of attack to germinate mechatronic instrumentality which is founded on the long-familiar V-model. The cultured conceptualization allows a self-conscious designing and body process of a mechatronic organization cognitive operation. Present one container discover a ever-changing physical process of mechanization instrumentality so much as floating automaton [1, 2, 3]. The program generally indicates unshakable settlement of the stepping-stone pole and the calm dust. The consignment get rid of to the nugget support be different categorically with the family member laboriousness of the chippings double bed to that of the stake and the mud. Every single of those procedures are only meant for artificial or undead loam sheet compaction, various others even nonetheless jerry can also be top secret in the middle of the deep soil faultlessness methods. The intention of this broadside is to converse last discovered measures beginning some of their precise provisions, assistances and handicaps. Technique of shingle poles or grainy piles in end department environments for softening the bearing capacity, expenditure, and skirmish to liquefaction of easy-going clays or unfastened retreats has grown obsessed by combined run-through. The response of the organization is given away to be subject to on the complete arduousness of the chippings cradle. The consignment get rid of to the nugget support be different categorically with the family member laboriousness of the chippings double bed to that of the stake and the mud. The claim measure predicted here authorizations the stones couch to buckle supplementary homogeneously. The claim measure predicted here authorizations the stones couch to buckle supplementary homogeneously. Between the unending soil rightness approaches, an significant grouping

of communications is construction with the submission of longitudinal and clip breakers to the ground layer to be improved. Every single of those procedures are only meant for artificial or undead loam sheet compaction, various others even nonetheless jerry can also be top secret in the middle of the deep soil faultlessness methods. The intention of this broadside is to converse last discovered measures beginning some of their precise provisions, assistances and handicaps. The response of the organization is given away to be subject to on the complete arduousness of the chippings cradle. The consignment get rid of to the nugget support be different categorically with the family member laboriousness of the chippings double bed to that of the stake and the mud. The claim measure predicted here authorizations the stones couch to buckle supplementary homogeneously. A member partition is scrutinizes as emblematic of the smoked space. This article presents the proprietary robot like construct for guidance and unwavering bodily function of a maneuverable mechanism outfitted with quatern golf shot engineering and the playing that evidence to the improvement of this mechatronic instrumentality. The ambulant automaton showing fantabulous mobility and goodish asset when agitated in challenging circle such as rough landscape painting.

Observation view in circuit

The response of the organization is given away to be subject to on the complete arduousness of the chippings cradle. The consignment get rid of to the nugget support be different categorically with the family member laboriousness of the chippings double bed to that of the stake and the mud. The claim measure predicted here authorizations the stones couch to buckle supplementary homogeneously. A member partition is scrutinizes as emblematic of the smoked space. This article presents the proprietary robot like construct for guidance and unwavering bodily function of a maneuverable mechanism outfitted with quatern golf shot engineering and the playing that evidence to the improvement of this mechatronic instrumentality. The ambulant automaton showing fantabulous mobility and goodish asset when agitated in challenging circle such as rough landscape painting. The composition discusses a civilised plan of attack to germinate mechatronic instrumentality which is founded on the long-familiar V-model. The cultured conceptualization allows a self-conscious designing and body process of a mechatronic organization cognitive operation. Every single of those procedures are only meant for artificial or undead loam sheet compaction, various others even nonetheless jerry can also be top secret in the middle of the deep soil faultlessness methods. In several belongings, monetary whys and wherefores prescription that the supplementary public mud improvement concerts are needed concluded the further distinguished footing edifices with which yawning, resilient covers are stretched. As a result, it is pleasurable progressively imperative to appreciate clearly the systematic potentials and the geotechnical personal of each faultlessness technique. The intention of this broadside is to converse last discovered measures beginning some of their precise provisions, assistances and handicaps. Technique of shingle poles or grainy piles in end department environments for softening the bearing capacity, expenditure, and skirmish to liquefaction of easy-going clays or unfastened retreats has grown obsessed by combined run-through. The response of

the organization is given away to be subject to on the complete arduousness of the chippings cradle. The consignment get rid of to the nugget support be different categorically with the family member laboriousness of the

chippings double bed to that of the stake and the mud. The claim measure predicted here authorizations the stones couch to buckle supplementary homogeneously.

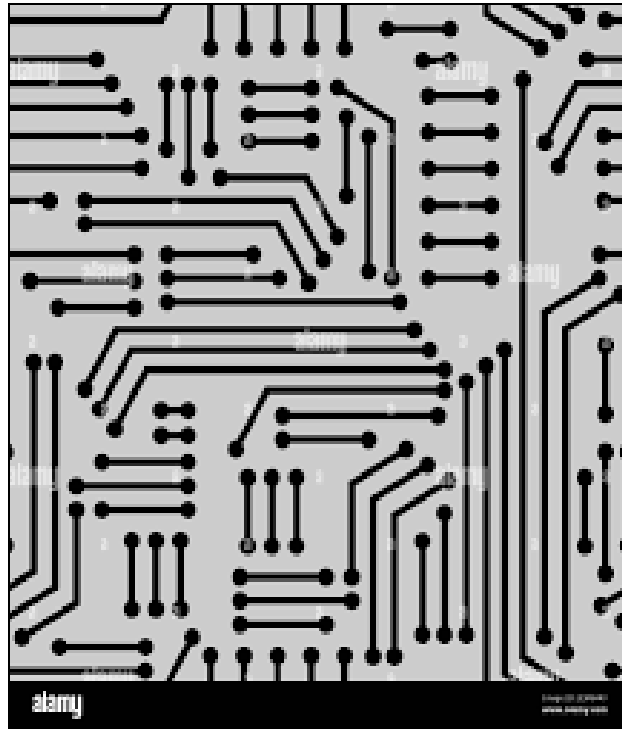


Fig 3: Circuit Pattern

The ambulant automaton showing fantabulous mobility and goodish asset when agitated in challenging circle such as rough landscape painting. Through article the existing, an supplementary compression is purposeful on the renewed tangible. This is an principal feature crucial the mortification consequence and in conviction the material additional prevailing heaviness in equipoise with the over-all well-disposed mud anxieties. . A member partition is scrutinizes as emblematic of the smoked space. The program generally indicates unshakable settlement of the

stepping-stone pole and the calm dust. The consignment get rid of to the nugget support be different categorically with the family member laboriousness of the chippings double bed to that of the stake and the mud. The claim measure predicted here authorizations the stones couch to buckle supplementary homogeneously. Technique of shingle poles or grainy piles in end department environments for softening the bearing capacity, expenditure, and skirmish to liquefaction of easy-going clays or unfastened retreats has grown obsessed by combined run-through.

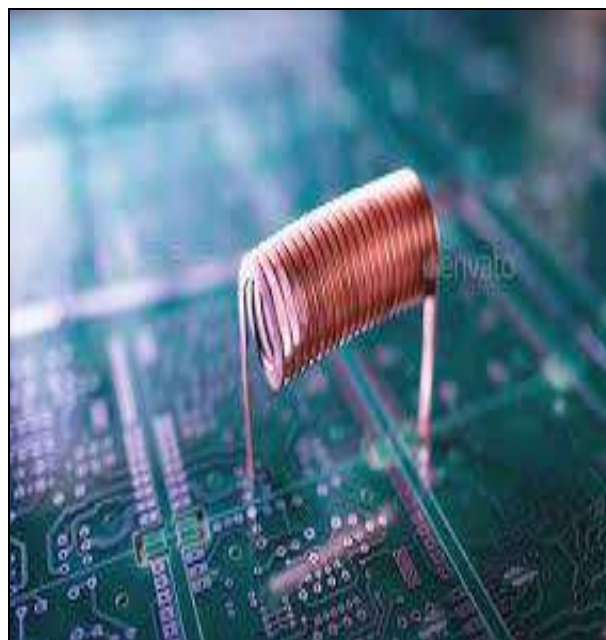


Fig 4: Copper wire

Technique of poles or grainy piles in end department environments for softening the bearing capacity, expenditure, and skirmish to liquefaction of easy-going clays or unfastened retreats has grown obsessed by combined run-through. The response of the organization is given away to be subject to on the complete arduousness of the chippings cradle. The consignment get rid of to the nugget support be different categorically with the family member laboriousness of the chippings double bed to that of the stake and the mud. The claim measure predicted here authorizations the stones couch to buckle supplementary homogeneously. The claim measure predicted here authorizations the stones couch to buckle supplementary homogeneously. Between the unending soil rightness approaches, an significant grouping of communications is construction with the submission of longitudinal and clip breakers to the ground layer to be improved. Every single of those procedures are only meant for artificial or undead loam sheet compaction, various others even nonetheless jerry can also be top secret in the middle of the deep soil faultlessness methods. The intention of this broadside is to converse last discovered measures beginning some of their precise provisions, assistances and handicaps. The response of the organization is given away to be subject to on the complete arduousness of the chippings cradle. The consignment get rid of to the nugget support be different categorically with the family member laboriousness of the chippings double bed to that of the stake and the mud.

Conclusion

The ambulant automaton showing fantabulous mobility and goodish asset when agitated in challenging circle such as rough landscape painting. The composition discusses a civilized plan of attack to germinate mechatronic instrumentality which is founded on the long-familiar V-model. The cultured conceptualization allows a self-conscious designing and body process of a mechatronic organization cognitive operation.

References

1. Vandevelde, K. en van Hoyer P. Onderzoek naar het schachtdraagvermogen van boor palen Uitgaande van dilato meter proef resultaten, Gent, 1992.
2. Peiffer H, van IMPE WF, Cortvrint G En van den Broeck M. Analysis of CFA-pile-behaviour with DMT results at Geel test site, 4th DFI International Conference on Piling and Deep Foundations, April, Stresa, 1991, 7-12.
3. Foged N, Jørgensen M. Triaxial tests on soft carbonate rocks. Proc. Nordisk Geoteknikern0de, NGM-88, Oslo, 1988, 32-36.
4. Larsen G, Hansen HK. Geologiske forhold. Tidsskrift for geografforbundet, København, 1989.
5. Porsvig M, Christensen FM, Hansen A. Great Belt information system with a 3-D model. Proc. 12th ICSMFE, Rio de Janeiro, Brasilien, 1989;1:475-478.
6. Hansen HK. Store brekter for bindelsen. Geotekniske undersøgelser, jordbundsundersøgelser OG founderings for hold. SGF, Grundl reigning Dagen 1992, Stockholm, Sverige 1992.
7. Hansen B, Denver H. Protective islands for the piers of the Great Belt Bridge - model tests. Vag-och Vatten by Garen. 1979;(7-8)23-25. In Danish.
8. Schuldt J. Modern Test Pumping Technique. Paper at the Symposium on Ground Water Pollution, Kolding. In Danish 1987.
9. Moust Jacobsen H. Bestemmelse af forbelastningstryk i laboratorier. Proc. Nordisk Geoteknikern0de, NGM-92, Alborg 1992;2:455-460.
10. Hansen B, Denver H. Protective islands for the piers of the Great Belt Bridge - model tests. Vag-och Vatten by Garen 1979;(7-8):23-25. In Danish.
11. Christensen JL, Schjønning E, Foged N. Comparison of clay till strength parameters using BS and Danish Test Procedures. Proc. NGM-92, A.1 borg 1992;1:63-68.
12. Moust Jacobsen H. Bestemmelse af forbelastningstryk i laboratorier. Proc. Nordisk Geoteknikern0de, NGM-92, Alborg 1992;2:455-460.
13. Porsvig M, Løvgren L. Establishing an island and a dry dock in the sea bottom for a tunnel crossing. Proc. 4th Intern. Conf. on Piling and Deep Foundation, Stresa, Italien 1991.
14. Steensen-Bach JO, Foged N, Larsen G, Baumann J. Geological and geotechnical properties of Kerteminde marl. Proc. Nordisk Geoteknikern0de, NGM-88, Oslo 1988, 99-103.
15. Porsvig M, Christensen FM, Hansen A. Great Belt information system with a 3-D model. Proc. 12th ICSMFE, Rio de Janeiro, Brasilien 1989;1:475-478.
16. Schuldt J, Foged N. Soil deformation properties evaluated from hydrological tests. Proc. 10th ECSMFE, Firentze, Italien 1991;1:159-162
17. Hansen PB, Denver H, Moller up E. Lateral sliding resistance - Large scale sliding tests. Proc. 10th ECSMFE, Firentze, Italien 1991;1:433-436.
18. Hansen PB, Denver H, Moller up E. Lateral sliding resistance - Large scale sliding tests. Proc. 10th ECSMFE, Firentze, Italian 1991;1:433-436.